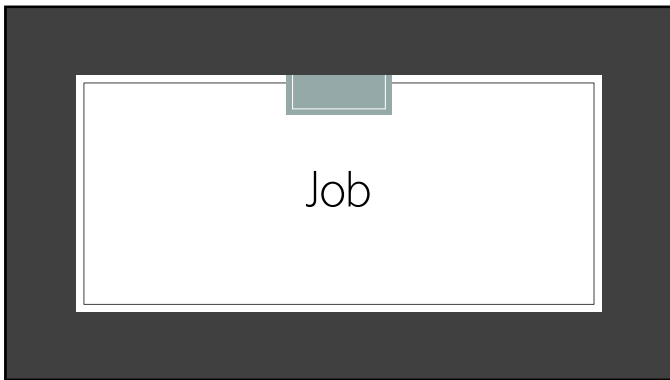
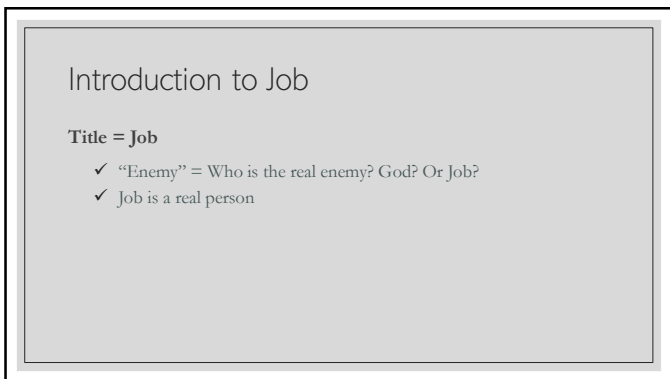


1



2



3

Introduction to Job

WHO—Authorship

- ✓ Job? (Job 42:17)
- ✓ Moses? (minority early view)
- ✓ Solomonic era? (or Solomon; prevailing late view)
- ✓ Elihu
 - Has a Hebrew name (only other character with Hebrew name is Job)
 - Long credentials (32:2)
 - Related to Buz (Gen 22:21) and Ram (“Abram”)
 - Cameo appearance
 - Not scolded by God (or spoken to by anyone)

4

Introduction to Job

WHO—Audience

- ✓ Israel?
- ✓ Patriarchs?
- ✓ The World
 - Terminology borrowed from multiple languages
 - Aramaic, Arabic, Ugaritic similarities
 - Job asks the questions which only have answers that affect the entire fate of the world. That is why Job is so intriguing to Christians, Jews, and unbelievers alike.

5

Introduction to Job

WHEN

- ✓ Late? (1450 – 930 B.C.; between Moses and Solomon)
- ✓ Early (1800 – 1500 B.C.; Abraham, Isaac, Jacob)
 - Wealth/currency measured like patriarchs (cp. Job 1:3 with Gen 26:14)
 - No knowledge of Israel, Levitical system, etc.
 - He is depicted as an early king without officially being one (1:3)
 - He acted as a priest (1:5), similar to Melchizedek (Gen 14)
 - Job's lifespan (lived 140 years after the events in the book)
 - Proto-Hebrew terminology
 - Locations and people (e.g., Uz [1:1; Gen 22:21], Buz [32:1; Gen 22:1], Sheba [1:15; Gen 25:3])

6

Introduction to Job

WHERE

- ✓ Uz, east of Israel (1:3)
- ✓ Post-Flood
- ✓ Essentially the wealthiest man on the earth (e.g., owner of Walmart)
- ✓ Few notable men from the Bible have lived yet
- ✓ The stage of the world is set for the opening act. What is life about and what is God up to?

7

Introduction to Job

WHY

- ✓ Who is the true enemy? (אֱוִיב; *ee-yov*)
- ✓ Who is man that You spy on him? (Job 7:7; cf. Ps 8:4)
- ✓ How can a man be made right with God? (Job 9:2; 25:4; cf. Rom 3:20–24)
- ✓ Where can wisdom be found? (Job 28:12, 20, 28; cf. Prov 2:1–6)

Job asks the most critical questions from a man in the most severe of suffering to introduce to the world how God will reveal His plan to make man right with Him.

8

Introduction to Job

HOW—Terminology and Themes

- ✓ Enemy (13:24; 27:7; 33:10)
- ✓ Fear of God (e.g., 1:1, 8 2:3; 14; 28:28)
- ✓ Righteousness (e.g., 4:17; 6:29; 9:1, 20; 10:15; etc.)
- ✓ Wisdom (e.g., 4:21; 5:13; 9:4; 11:6; 12:2, 12, 13; 28:12, 20, 28; etc.)
- ✓ “Oh that” wish (e.g., 13:5; 14:4, 13; 19:23 (2x); 29:2; etc.)
- ✓ “Answered” discourse formula (e.g., 3:2; 4:1; 6:1; 8:1; 9:1; 11:1; etc.)
- ✓ Puns (8:5; 16:14; 22:10)
- ✓ Poetic discourse—extreme intelligent conversation (not just what they say, but how they say it)

9

Introduction to Job

HOW—Literary Structure

- ✓ God Is Right in Heaven (1:1 – 2:22)
- ✓ God Is Right on Earth (3:1 – 42:17)
 - Wisdom “from” Heaven (i.e. Pre-Modern Arguments; 3:1 – 14:22)
 - Wisdom “from” Earth (i.e. Modern Arguments; 15:1 – 21:34)
 - Wisdom “from” Self (i.e. Post-Modern Arguments; 22:1 – 31:40)
 - Wisdom from Self-Restraint (32:1 – 37:24)
 - Wisdom from God (i.e. Absolute Truth; 38:1 – 41:34)
 - Wisdom Received (42:1–17)
